



# 2020+ 4 Stroke Water Pump Rebuild kit

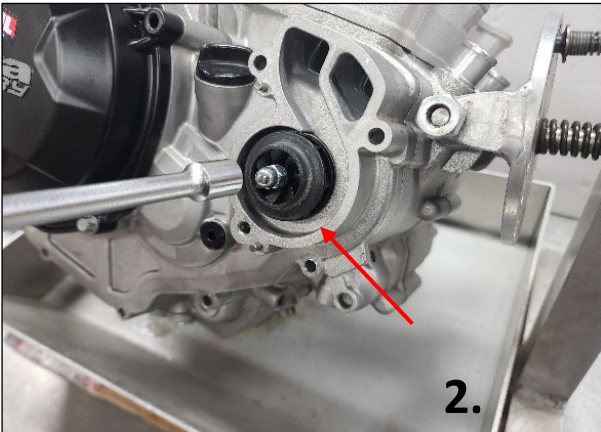
Part Number: 50011-4

All 2020+ RR,RR-S 4 Strokes

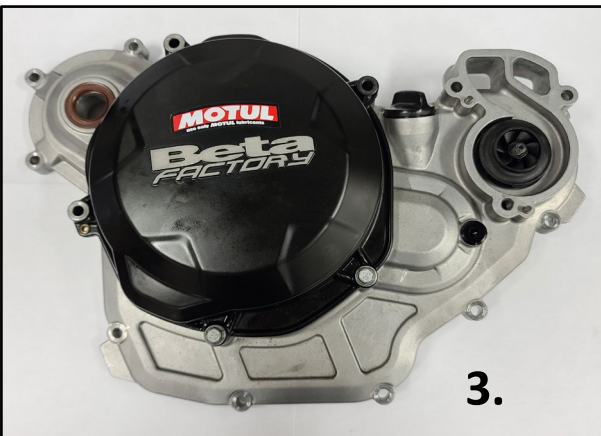
## Installation Instructions:

**Note:** The water pump unit can only be serviced with entire clutch cover removed.

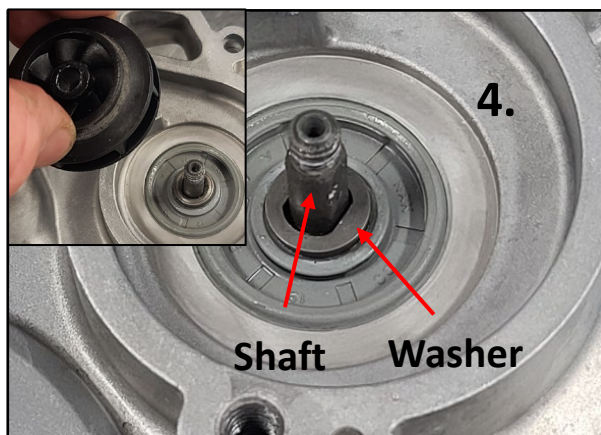
1. Drain cooling system and transmission oil.
2. Remove the water pump cover and impeller nut.



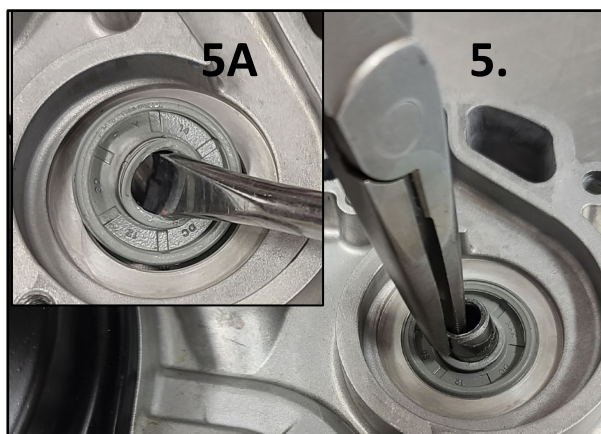
3. Remove the clutch cover assembly. Clean all gasket surfaces.



4. Remove the impeller, washer and shaft. The shaft can be removed by pressing the threaded side towards the inside of the clutch cover.



5. Remove the bushing.

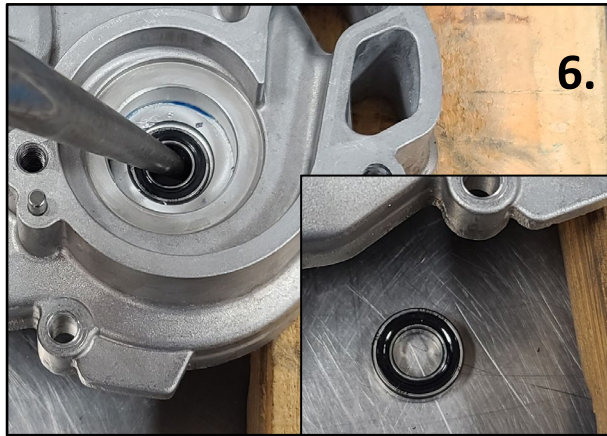


- 5A Remove the seal by inserting a screw driver between the seal and housing then twist and pry it upward.

# 2020+ 4 Stroke Water Pump Rebuild

Part Number: 50011-4

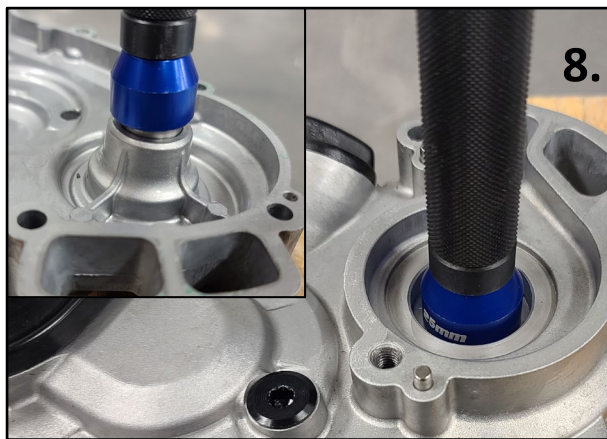
All 2020+ RR,RR-S 4 Strokes



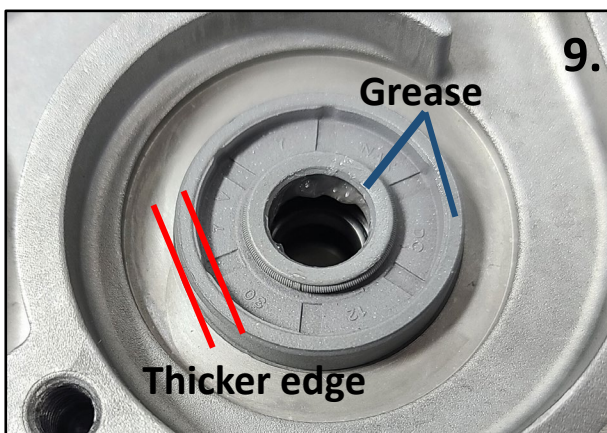
6. Knock the inner bearing out going through the outer bearing using a punch and hammer.



7. Flip the case over then remove the outer bearing using the same method.



8. Drive the new bearings in until they are flush.



9. Grease the inner and outer lips of the seal.

Reference the seal so the thicker edge is facing up.



# 2020+ 4 Stroke Water Pump Rebuild

Part Number: 50011-4

All 2020+ RR,RR-S 4 Strokes

10. Drive the new seal flush with the housing.



11. Install the new O-ring on the water pump shaft.



12. Apply grease to the shaft O-ring then fully insert the shaft through the bearings.



13. Install the shaft bushing pushing it into the grease seal.

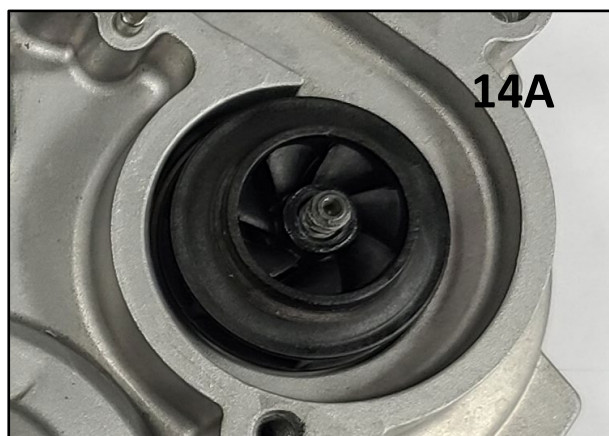
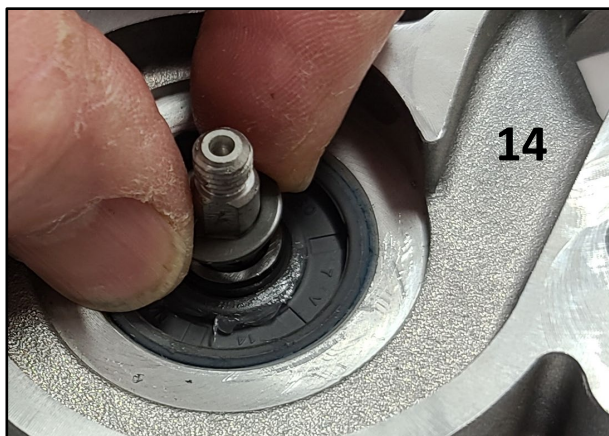


## 2020+ 4 Stroke Water Pump Rebuild

Part Number: 50011-4

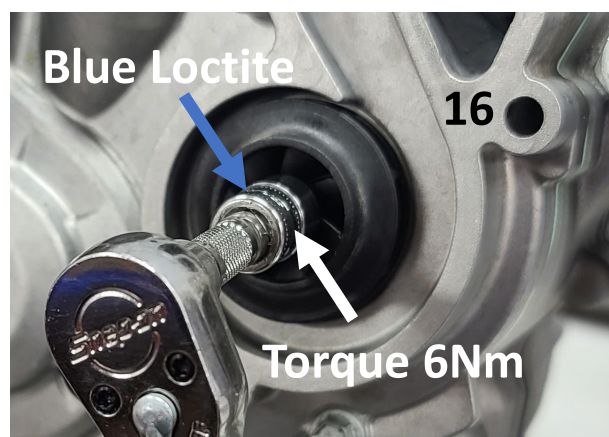
All 2020+ RR,RR-S 4 Strokes

14. Install the shaft washer and impeller.



15. Install the new gasket then install the clutch cover assembly.  
You might have to turn the impeller to get the cover fully seated.

16. Apply blue Loctite to the impeller nut threads then torque the nut to 6Nm.



17. Reinstall inner and outer clutch cover bolts.  
Reinstall the water pump cover using the new gasket.  
Make sure the copper washer is reused under bottom water cover bolt.  
Tighten all the bolts in a crisscross pattern and torque to 10Nm.



18. Refill coolant and transmission oil.