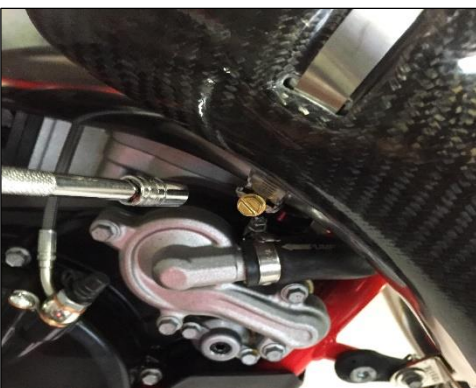




# Beta P3 Carbon Pipe Guard

Part# AB-21239, -21240, -21241, -21242

Fits: 2013+ Beta 2-strokes



## Installation Instructions:

**Tools needed: 8mm socket wrench &/or flat blade screwdriver.**

Note: AB-21239 fits Beta 125 RR, AB-21240 fits Beta 250/300 RR stock pipes, AB-21241 fits 250/300 RR Gnarly & Fatty pipes, AB-21242 fits Beta XTrainer.

1. Remove packaging & position carbon pipe guard onto the pipe to determine proper location & best band clamp orientation.
2. In determining band clamp positioning, ensure there's access to the screw adjusters for ease of assembly & disassembly.
3. Route the band clamps through the carbon guard slots.
4. Place carbon guard onto pipe & engage the band clamp worm gears.
5. As both band clamps are tightened & it's possible to rotate the clamps & tuck in the band tips under the guard.
6. Once you're satisfied with the guard placement & clamp position, snug the band clamps securely but don't overtighten them.