



Oil Breather Block Off Plug

Part# AB-21185
2015 + EFI 4 Stroke Models

Instructions:

Remove the stock oil breather hose and elbow fitting at the rear airboot, put a thin layer of silicone around the plug and push it into the airbox using the stock clamp as shown in photo A. Turn the breather hose around and reroute it as shown in photo B and use zipties to tie it to the bottom of the EFI throttle body and to the rear of the engine case. The hose will exit at the rear of the engine case.

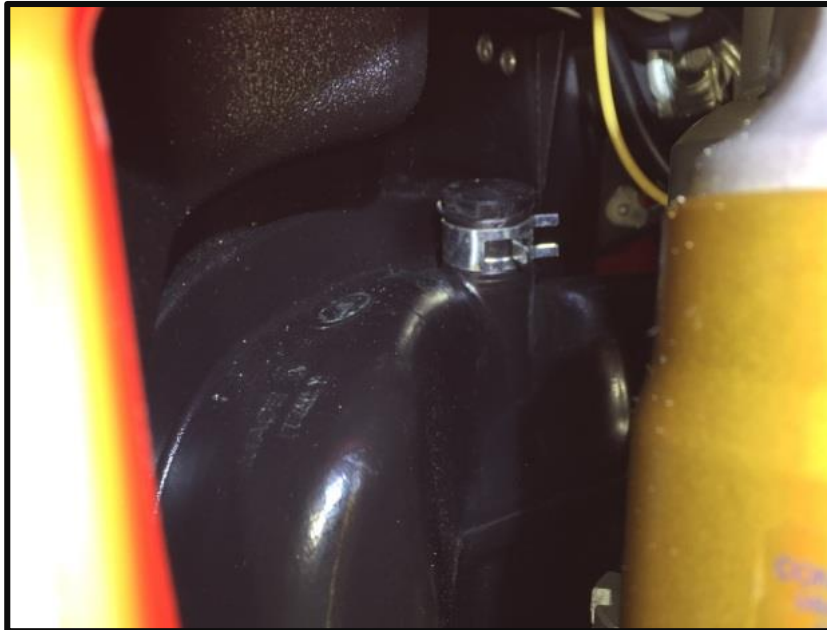


Photo A

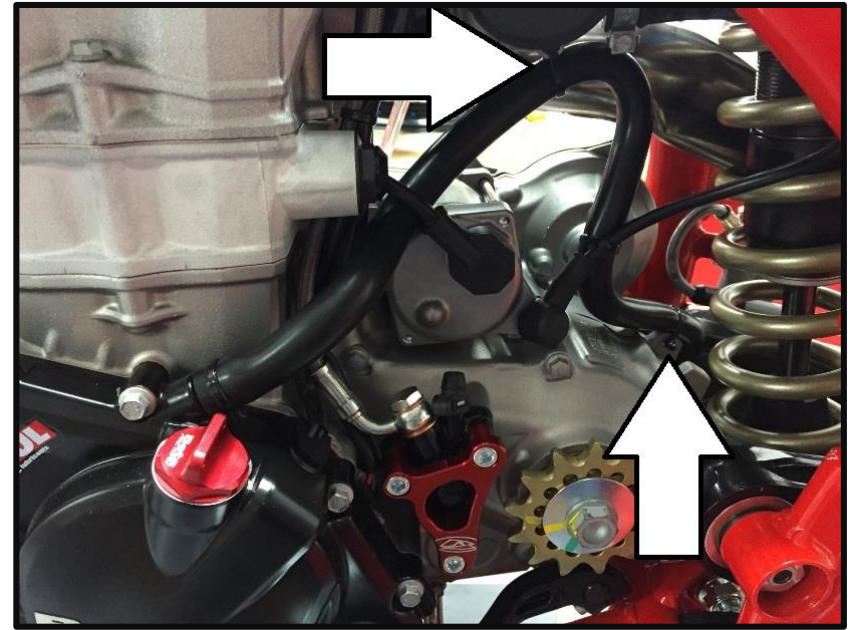


Photo B