



6240 Box Springs Blvd., Unit E
Riverside, CA 92507

Web: <http://www.imsproducts.com>

Orders: (800) 237-9906

Information: (951) 653-7720

FAX: (951) 653-1060

WARNING!

Prior to Installation Clean IMS Tank Interior Thoroughly
Install This Fuel Tank ONLY In a Well Ventilated Area, As Gasoline Fumes Are
EXTREMELY Dangerous. DO NOT START OR OPERATE THE VEHICLE IF
THERE ARE ANY FUEL LEAKS!

IMS Recommends That Installation Be Performed By a Licensed Mechanic.
Improper Installation May Result in Severe Bodily Injury or Death.
Prior to Installation Read All Instructions.

Beta:

(EFI RR / RS / RR-S Models)

Beta USA #: AB-12041

Fuel capacity: 4.0 gallon "Rally"

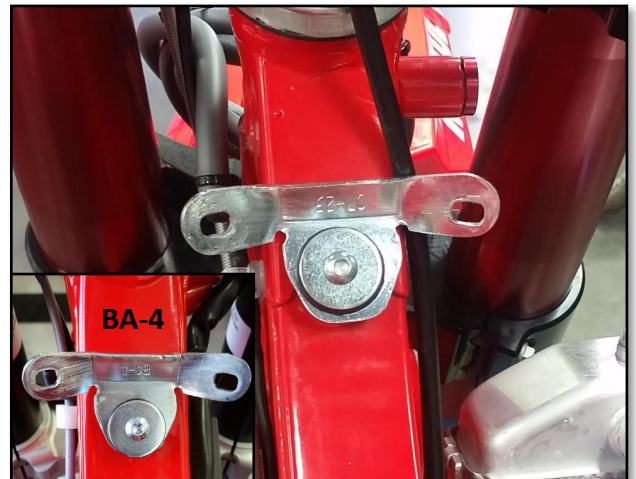
PARTS LIST

- (2) 6x12 Button head bolts
- (3) 6x20 Button head bolt
- (2) 6x16 Button head bolts
- (4) 6x12 flange bolts
- (4) countersunk phillips screws
- (2) fuel valves including gaskets and support plate
- (2) Plastic shroud spacers
- (1) 6x25 Washer
- (1) CR-25 Front mount bracket (grommet & spacer)
- (1) BA-4 Front mount bracket (grommet & spacer)
- (1) "L" Bracket (rear mount)
- (1) male/female quick-connect fitting
- (4) hose clamps
- (2) fuel hose lengths
- (4) support plates
- (2) "L" brackets for lower tank support
- (4) 5mm nylock nuts

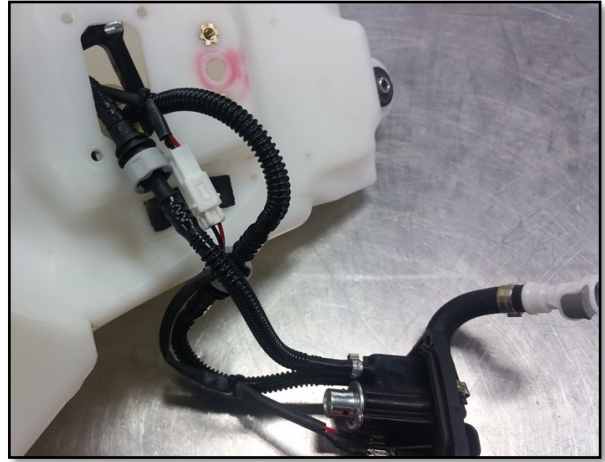
Note: 2018+ 4-Stroke requires the taller BA-4 Bracket.

Step 1: Disconnect the battery. Remove the stock fuel tank.
Install the front bracket as shown in the stock top tank mounting
point using the 6x20 button head bolt and the 6x25 washer.

Step 2: Install both fuel valve mounting plates with the gaskets to
the tank using the countersunk phillips head screws. Thread the
fuel valves into the mounting plates until tight. Make sure the
valves spigots point in the direction shown in the photo. Install
the crossover fuel hoses, quick connects, and clamps as shown.



Step 3: Remove the regulator assembly along with the low fuel sensor from the stock tank. Pull the two hoses and the wire coupler far enough out to disconnect.



Step 4: Using the small yellow tool provided, disconnect the two hoses by inserting the tool into the coupler and pressing inward to allow the two to separate. Disconnect the electrical plug as well.



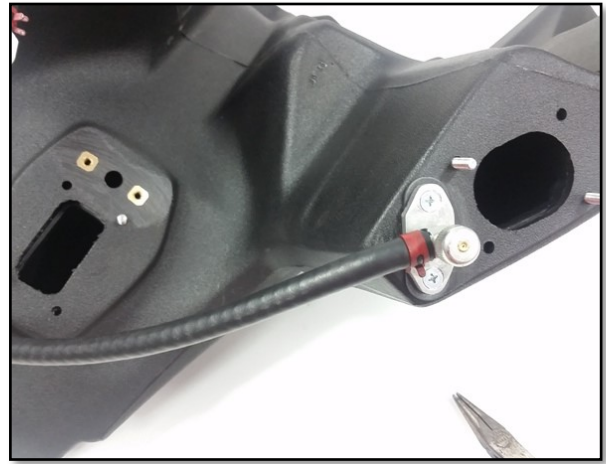
Step 5: Remove the fuel pump from the stock tank.



Step 6: Remove the two inner support housings from the fuel pump mount and the regulator mounting points.



Step 7: Install the two inner support housings into the new tank. A tip is to install a couple of the nylock nuts finger tight to help keep them from falling inside the tank. You can remove them when you are ready to install the components.



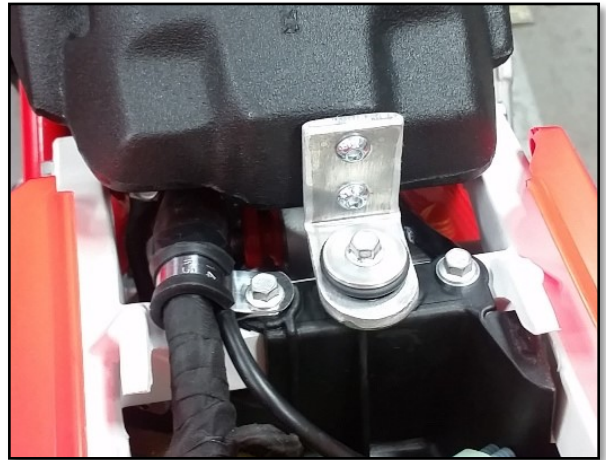
Step 8: Install the fuel pump first using the two mounting plates, supplied nylock nuts and the two stock 5mm bolts. Fish the wires and hoses over to exit out the pressure regulator hole. Connect the two hoses and electrical connector and install the pressure regulator assembly in the same manner as the pump. Reinstall the low fuel sensor using the stock hardware.



Step 9: Install the two L brackets into the existing lower radiator shroud mounting spot using the 6x20 button head allen bolts as shown. Install the tank onto the motorcycle making sure to connect the fuel inlet to the stock fuel hose coming from the throttle body. Also connect the low fuel sensor. Install the L bracket to the fuel tank using the 6x12 flange bolts.



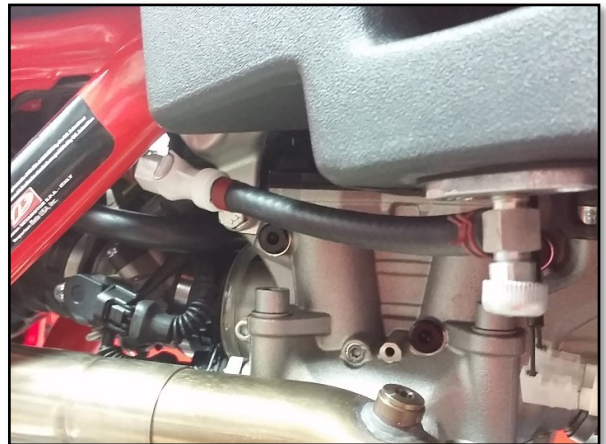
Step 10: Install the rear mount to the tank using the two 6x16 button head allen bolts. Install the rear mount to the subframe using the stock mounting spacer and rubber cushion.



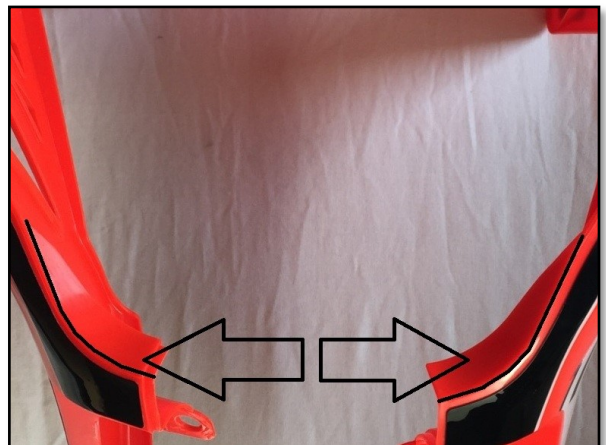
Step 11: Install the two 6x12 flange bolts to the front mount and tighten.



Step 12: Route the crossover hose around the rear of the cylinder and over the top of the EFI throttle body and connect the quick release connector to the other cross over hose. Make sure the fuel hose is free of the cylinder head or any sharp objects.



Step 13: With a razor, carefully trim both radiator shrouds at the top as shown in the photo. This will allow proper clearance to fit the tank. Install the shrouds using the stock hardware everywhere except the rear mounting point which uses the remaining two 6x12 button head bolts and the two plastic washers. Install the seat hook screw from the stock gas tank.



Step 14: Reconnect the battery, reinstall your seat. Fill the motorcycle with fuel and check for leaks before riding.

